



# New **narcotics** in Thailand

Presented by

Mr. Nattapon LIKITTANANAN

Ms. Jittiput THITINILNITHI

Division of forensic investigation, Forensic chemistry section

Central Institute of Forensic Science (CIFS)

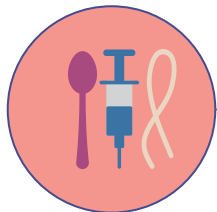


# Narcotics situation around the world in 2023

1

## 01 Bath Salts

First used in USA in 2022



## 03 Laughing Gas

First used in Mexico in 2022



## 05 Pink Cocaine

First used in South Africa in 2022



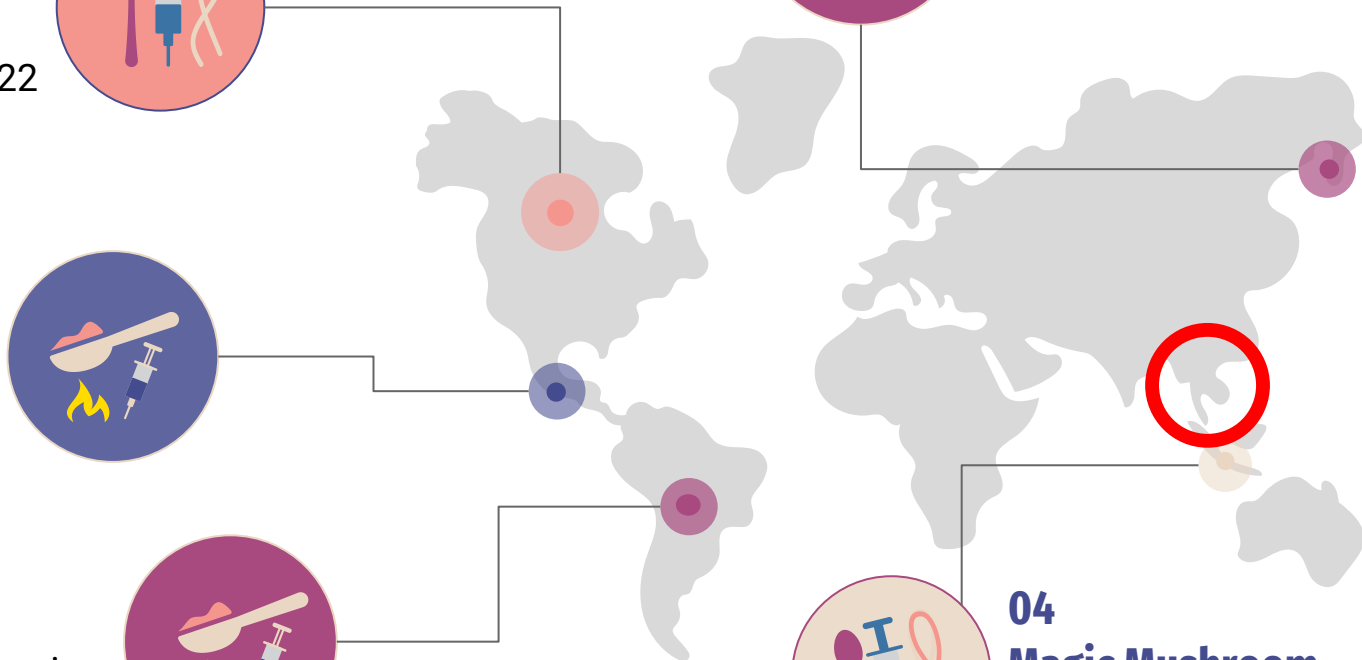
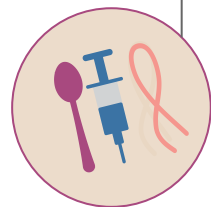
## 02 Narcotic Stamp

First used in Japan in 2022



## 04 Magic Mushroom

First used in Indonesia in 2022



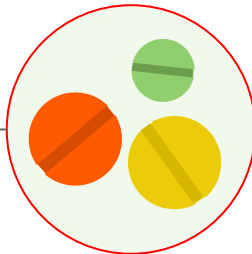
# Past & Previous Narcotic in Thailand

206,361



## Flavor Narcotic & Herb

:For example:  
Amphetamine, Cocaine,  
Ketamine, Cannabis.



## Synthetic stimulant

Nowadays, User prefer to combine  
drug and narcotic to stronger action.  
Ex. Pink Cocaine and Bath salt.



## Hazardous



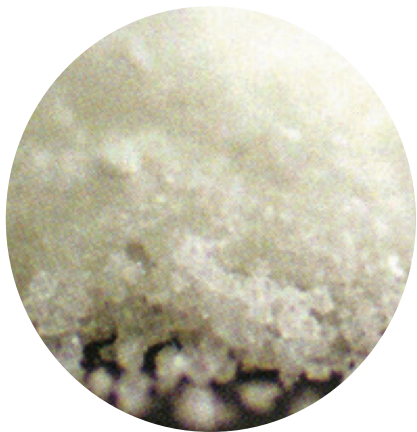
70% Past



99% Up to date

# BATH SALTS

3



## What's it ?

- Bath salts named from morphology that look like spa salt.
- Synthetic cathinone class (Psychotropic substance Category 1 ) of drugs.
- Commercial named as bath salts, plant food, glass cleaner



## What's effect on body?

- euphoria and alertness, aggressive, violent, and self- destructive behavior.
- Rapid heartbeat, hypertension, hyperthermia, sweating, headaches.
- In case of overdose have been reported of death from risk users.



## What's does it look like?

- The powdered form is also compressed in gelatin capsules.
- Marketing name: Bliss, Blue Silk, Cloud Nine, Vanilla Sky
- Usually mix with juice and cocktail to reduce bitter taste.

# Composition & active properties

## Bath Salts

How are they abused ?



**Methylene dioxypyrova (3,4- Methylenedioxy-Pyrovalerone, MDPV)**

: Stimulant and Hallucinogen (Category 1 Narcotic )



**Mephedrone**

: Stimulant and Hallucinogen like Amphetamine and cathinone (Category 1 Narcotic )



**Methylone (3,4- Methylenedioxy-N-methylcathinone)**

: Stimulant and Hallucinogen like MDMA (Category 1 Narcotic )



**$\beta$  – CFT (Synthetic Cocaine, WIN35 – 428)**

: Stimulant and Hallucinogen like Cocaine (Active more than Cocaine 10 times)



## What's it ?

- Rohypnol® is a trade name for **flunitrazepam**.
- It belongs to a class of drugs known as **benzodiazepines**.
- Rohypnol is also referred to as a “date rape” drug.



## What's effect on body?

- Rohypnol produce a euphoric effect often described as a “high.”
- While high, they experience reduced inhibitions and impaired judgment.
- Rohypnol can decrease reaction time, impaired mental functioning and judgment, confusion and excitability.



## What's does it look like?

- The tablet can be swallowed whole, crushed and snorted, or dissolved in liquid.
- Rohypnol is also used in combination with alcohol to produce an exaggerated intoxication.

# Composition & active properties

6



Rohypnol

How are they abused ?



Flunitrazepam (Psychotropic substance Category 2 )

: Rohypnol are used for the wrong purpose as get high (decrease reaction time) and reduce self control that's ending with sexual assault.

High doses of Rohypnol particularly when combined with alcohol and heroin, can cause severe

- sedation
- unconsciousness
- slow heart rate
- suppression of respiration



# Narcotic Stamp

7



## What's it ?

- Death stamp is absorbent paper that saturated LSD (Lysergic acid diethylamide).
- The divide to small squares that representing one dose.
- The street name are **Magic paper**.



## What's effect on body?

- The physical effect increased heart rate, blood pressure, sweating, loss of appetite and dry mouth.
- The overdose effect may cause serious psychological harm including fear, depression, anxiety, and paranoid.



## What's does it look like?

- Death stamp usually be a small square piece of paper (Cartoon or emoji).
- When oral the stamp its will slightly bitter taste.



# Composition & active properties

8



**Death Stamp**

**How are they abused ?**



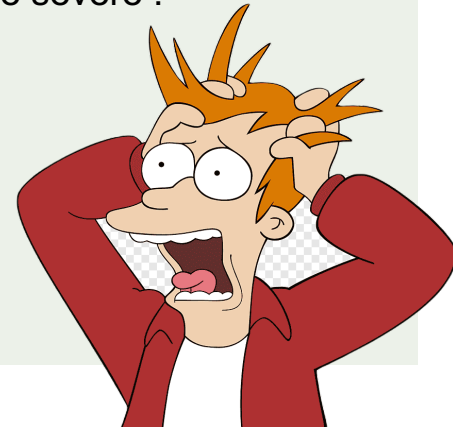
## LSD LSD (Lysergic acid diethylamide).

: Hallucinogen Persisting Perception Disorder, which may include fragmentary recurrences of certain aspects of the drug experience or “flashbacks” have been reported days.



High doses of LSD can cause severe :

- Fear
- Depression
- Anxiety
- Paranoia



# Laughing Gas

9



## What's it ?

- Nitrous oxide, commonly known as laughing gas or happy gas, is a colorless, non-flammable gas.
- This gas is used in medical and dental to relieve anxiety before the procedure.



## What's effect on body?

- Nitrous oxide is a depressant, so it slows your body down. Once it kicks in, you may feel:
  - Happy
  - Giggly
  - Memory loss
  - Incontinence
  - Light-headed
  - Mild euphoria
  - Relaxed
  - Depressant



## What's does it look like?

- Laughing gas (Nitrous Oxide) usually compress in metal capsule then mix with air in balloon to inhale.
- Sometime is mixing with another narcotic to get longer active.

# Composition & active properties

10



**Laughing Gas**

**How are they abused ?**



## Nitrous Oxide

- At the 1<sup>st</sup> Phase will feel Relaxed, giggly, sound distortions.
- It usually active immediately after inhale and still active for 1 – 2 mins.

Mixing with another drug:

- Benzodiazepine group
- Narcotic drug
- The mixing drug will increase risk of unpredictable consequence.



# K Powdered Milk

11



## What's it ?

- K powdered milk is a cocktail of narcotics made of **ketamine** blend with **methamphetamine**, **heroin** and the **sleeping pills**.
- All ingredients are all crushed up together and providing synergistic effects.



## What's effect on body?

- The body produces serious effects as hallucinations, drowsiness, self-consciousness deficits, loss of coordination.
- If **overdosed**, fatal consequence can be a respiratory arrest that eventually leads to a **sudden death** even during the first use.



## What's does it look like?

- The powdered form is usually mix with milk powder to sweet taste.
- Marketing name **K nom phong**, Sweet milk, **Cocktail**.
- Usually **smoked**, **snorted**, and **mixed with alcohol drink**.

# Composition & active properties

12



**K Powdered milk**

**How are they abused ?**



## **Ketamine**

: Strong Hallucinogen and psychosis (Psychotropic substance Category 2 )



## **Methamphetamine (Crystal Meth)**

: Stimulant ,Over heated and highly addictive (Category 1 Narcotic )



## **Heroin (Opiate narcotic)**

: Sedative and drowsiness effect (Category 1 Narcotic )



## **Clonazepam (Benzodiazepine Group,)**

: Excessive sleepiness and confusion. (Psychotropic substance Category 4 )

# Pink Cocaine

13



## What's it ?

- Pink Cocaine, also known as “tuci” or “tusi,” is a pink-dyed powder.
- Cocaine, Ketamine, Ecstasy and Caffeine are all crushed up together and providing synergistic effects.



## What's effect on body?

- First phase, energetic and decreased need for sleep.
- long-term health issues, such as cardiovascular problems and nasal passage damage.
- In regular use may cause mental health depression and anxiety.



## What's does it look like?

- The pink powder was mixed with DYE (Pink pigment) to get more attractive.
- Marketing name **Tuxibi, Nexus**
- Usually **smoked, snorted**, and **mixed with alcohol drink**.



# Composition & active properties

14



Pink Cocaine

How are they abused ?



## Cocaine

: Stimulant ,Over heated and highly addictive (Category 2 Narcotic )



## Ketamine

: Strong Hallucinogen and psychosis (Psychotropic substance Category 2 )



## Ecstasy (MDMA)

: Stimulant ,Over heated and highly addictive (Category 1 Narcotic )



## Caffeine & DYE

: Stimulant and carcinogen.



# Magic Mushroom

15



## What's it ?

- Magic mushrooms are commonly type of liberty caps that look like small tan-coloured mushrooms.
- Liberty caps are usually eaten raw and have a strong earthy taste and rubber-like texture.



## What's effect on body?

- If you eat magic mushroom the after effect may
  - Paranoia
  - Giggly
  - anxious
  - Confused
  - vomiting
  - Distortion
  - vision hallucinations



## What's does it look like?

- Liberty caps are usually eaten raw or putting them in an omelets or in tea.
- Liquid psilocybin is extracted from magic mushrooms caps that's colorless.

# Composition & active properties

16



**Magic Mushroom**

**How are they abused ?**



## **Psilocybin & Psilocin (Category 5 Narcotic)**

- Psilocybin comes from certain types of psilocybe mushrooms.
- Can take more than 30 mins to work.
- Abuse of psilocybin mushrooms could also lead to psychosis and possible death.

## **What does it taste ?**

- Liberty caps are taste bitter flavor and rubber texture which makes them very chewy.
- To reduce bitter flavor its flavor to mix with alcohol cocktail and cook with spicy ingredient.





01

## What is cane toad skin ?

- Cane toad can produce toxin from parotid gland as bufotoxin, aglucones, bufagins and bufotalins.

02

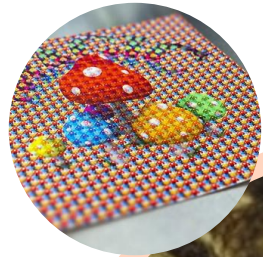
## What's effect on body?

- muscle weakness, rapid heart rate, and vomiting, Hallucinogen.
- The effect will show after take around 30 mins.

03

## Product

- Bofo paper is absorbent paper that saturated bufotoxin.
- Dried skin toad was cut in small piece and use as cigarettes.





# Conclusion & Discussion

19

New narcotic in Thailand



Key message.....



**DON'T TRUST  
EVERYTHING  
YOU SEE.  
EVEN SALT  
LOOKS  
LIKE SUGAR**



# References

- <https://www.bangkokhospital.com/en/content/ketamine-is-fatal>
- <https://www.dea.gov/factsheets/bath-salts>
- <https://rrtampa.com/pink-cocaine/>
- <https://www.dea.gov/factsheets/rohypnol>
- <https://www.dea.gov/factsheets/lsd>
- <https://www.drugs.com/illicit/lsd.html>
- <https://www.webmd.com/a-to-z-guides/what-to-know-about-laughing-gas>
- <https://www.talktofrank.com/drug/nitrous-oxide>
- [https://www.dea.gov/sites/default/files/2020-06/Psilocybin-2020\\_0.pdf](https://www.dea.gov/sites/default/files/2020-06/Psilocybin-2020_0.pdf)
- <https://myfwc.com/wildlifehabitats/profiles/amphibians/cane-toad/#:~:text=Potential%20Impacts,of%20people%20who%20handle%20the>  
m.

